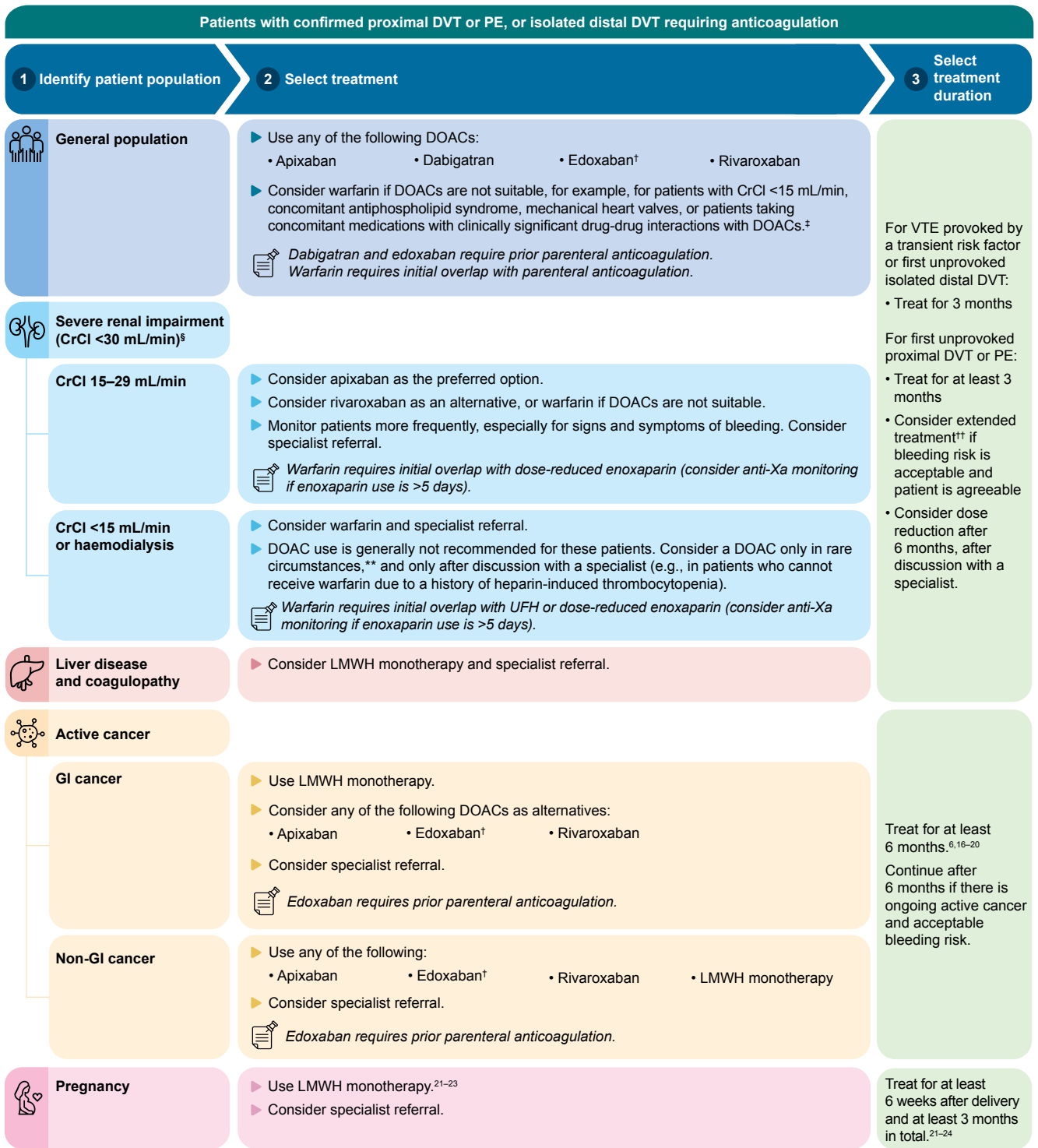


Figure 1. Selecting an appropriate anticoagulant and duration for VTE treatment

The figure below summarises the guidance on selecting an appropriate anticoagulant and duration for VTE treatment in various patient groups. More details on the evidence and context surrounding clinical considerations can be found in the main text of the ACG. Details on anticoagulants registered in Singapore, including treatment regimens, can be found in Table 1. Where there are multiple treatment options, practical considerations and individual patient circumstances should guide the choice of anticoagulant.



For patients with recurrent VTE, refer to a specialist

Prescribing considerations for warfarin

- Essential to perform INR monitoring due to its narrow therapeutic range
- Affected by multiple drug-drug, drug-food or drug-herb interactions; monitor effects using INR

Initial parenteral anticoagulation: see Table 1 on page 6 for more details.

[†] Edoxaban is registered in Singapore for the treatment of VTE but is not commonly used at the time of ACG publication.

[‡] DOAC use may be contraindicated in patients taking systemic strong CYP3A4 or P-glycoprotein inhibitors. Consult a pharmacist or appropriate online resources for information on medications with interacting metabolic pathways, especially when patients are taking new concomitant medications or supplements.

[§] Patients with CrCl <30 mL/min were excluded in pivotal trials for dabigatran, rivaroxaban, and edoxaban. Patients with CrCl <25 mL/min were excluded in the pivotal trial for apixaban.

^{**} Off-label use for patients with CrCl <15 mL/min or undergoing haemodialysis.

^{††} Patients enrolled in trials for extended treatment were assessed to be in clinical equipoise.

Abbreviations

CrCl, creatinine clearance
 DOAC, direct oral anticoagulant
 DVT, deep vein thrombosis
 GI, gastrointestinal
 INR, international normalised ratio
 LMWH, low molecular weight heparin
 PE, pulmonary embolism
 UFH, unfractionated heparin
 VTE, venous thromboembolism